

Woven sunscreen fabrics combine outward visibility with day-time privacy. Providing excellent light and heat control, these fabrics offer a suitable solution for any environment and protection level needed based on the fabric's openness factor and colour.

- Made with Fiberglass core yarn or DOW ECOLIBRIUM bio-based plasticizers.
- Highly fire retardant (tested to AS/NZ Part II and/or III with a flammability Index under 12).
- Tested and certified for low VOC emissions - no chemicals harmful to the health or safety of users.
- 5% or 10% openness factor.
- UV Blockage - up to 96% (depending on colour).
- Dark colours have a VLT (Visual Light Transmittance) <10.
- Good outward visibility.



Cloud



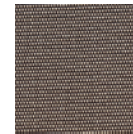
Merino



Haze



Dolphin



Lemur



Roan



Bark



Rhino



Slate



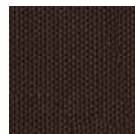
Moonlight



Vanilla



Mist



Fudge



Char



Kudu



Chamois



Tahr



Sable



Oryx

Specifications

Fabric Name	Width (mm)	Price Category	Openness Factor (OF)	Fire Retardant	Suitable for Moist Conditions	Matching Fabric*	Eco-Spec		Solar & Optical Properties				Warranty (years)	Care Instructions**
							Low VOC	RoHS/Lead Free	VLT	As	Rs	Ts		
SP View Cloud	3100	2	5%	•	•	•	•	20	16	65	19	5	A	
SP View Merino	3100	2	5%	•	•	•	•	18	18	61	21	5	A	
SP View Haze	3100	2	5%	•	•	•	•	12	33	52	15	5	A	
SP View Dolphin	3100	2	5%	•	•	•	•	7	57	33	10	5	A	
SP View Lemur	3100	2	5%	•	•	•	•	5	80	14	6	5	A	
SP View Roan	3100	2	5%	•	•	•	•	5	78	16	6	5	A	
SP View Bark	3100	2	5%	•	•	•	•	5	81	13	6	5	A	
SP View Rhino	3100	2	5%	•	•	•	•	5	83	12	5	5	A	
SP View Slate	3100	2	5%	•	•	•	•	5	86	8	6	5	A	
SP View Moonlight	3100	2	5%	•	•	•	•	17	9	71	20	5	A	
SP View Vanilla	3100	2	5%	•	•	•	•	16	18	62	20	5	A	
SP View Mist	3100	2	5%	•	•	•	•	9	37	51	12	5	A	
SP View Fudge	3100	2	5%	•	•	•	•	7	87	6	7	5	A	
SP View Char	3100	2	5%	•	•	•	•	4	90	6	4	5	A	
SP View Kudu	3200	2	10%	•	•	•	•	22	25	58	17	5	A	
SP View Chamois	3200	2	10%	•	•	•	•	20	35	50	15	5	A	
SP View Tahr	3200	2	10%	•	•	•	•	17	77	11	12	5	A	
SP View Sable	3000	2	10%	•	•	•	•	10	76	12	11	5	A	
SP View Oryx	3000	2	10%	•	•	•	•	12	83	5	12	5	A	

View® is a registered trademark of SP Blinds Ltd.

*Matching fabric names are listed on the back of applicable fabric swatches.

**Care instructions are explained in the SP Blinds price list booklet.



Key

- OF** **Openness Factor** - this factor measures the proportion of holes in a woven fabric. This parameter, together with other technical properties of the fabric, should be considered when determining the degree of visibility, heat and glare control that the fabric offers.
- VLT** **Visual Light Transmittance** - the percentage of visible light coming through the fabric, that can be seen by the naked eye. A low figure shows a very efficient fabric in reducing glare.
- As** **Solar Absorbance** - the proportion of solar radiation (heat) absorbed by the fabric. A low figure means the fabric absorbs little solar energy.
- Rs** **Solar Reflectance** - this factor measures how much solar radiation is reflected by the fabric. A high percentage means the fabric performs well at reflecting solar energy.
- Ts** **Solar Transmittance** - the proportion of solar energy (heat) transmitted through the fabric. A low percentage means the fabric performs well at reducing solar energy.
- VOC** **Volatile Organic Compound** - these are organic chemicals that have a high vapour pressure at ordinary room temperature. This causes a large number of molecules to evaporate and enter the surrounding air. A fabric that has been certified for Low VOC Emissions has no, or very low levels of, these chemicals.
- RoHS** **Restriction of Harmful Substances** - the RoHS directive issued by the EU aims to restrict the use of certain dangerous substances. Any RoHS compliant component is tested for the presence of Lead (Pb), Cadmium (Cd), Mercury (Hg), Hexavalent chromium (Hex-Cr), Polybrominated biphenyls (PBB), and Polybrominated diphenyl ethers (PBDE). For Cadmium and Hexavalent chromium, there must be less than 0.01% of the substance. For Lead, PBB, and PBDE, there must be no more than 0.1% of the material. Any RoHS compliant component must have 100 ppm or less of mercury and the mercury must not have been intentionally added to the component.



Décorview sunscreen fabrics combine outward visibility daytime privacy. A variety of textures and openness factors add interest and versatility to the interior space.

- Made from PVC coated polyester.
- Fire retardant (selected fabrics).
- Fabrics offer between 5% to 6% openness - with the open weaves offering the best outward visibility levels for maximising view.
- UV block up to 96% (depending on colour).
- Durable and easy to clean.



Dove



Luna



Seafog



Chestnut



Crow



Obsidian



Oyster



Frost



Rock



Granite

Specifications

Fabric Name	Width (mm)	Price Category	Openness Factor (OF)	Fire Retardant	Suitable for Moist Conditions	Matching Fabric*	Eco-Spec		Solar & Optical Properties				Warranty (years)	Care Instructions**
							Low VOC	RoHS/Lead Free	VLT	As	Rs	Ts		
Décorview Dove	3000	3	6%		•	•		25	11	63	26	5	A	
Décorview Luna	3000	3	6%		•	•		23	25	50	25	5	A	
Décorview Seafog	3000	3	6%		•	•		22	30	47	23	5	A	
Décorview Chestnut	3000	3	6%		•	•		11	89	4	7	5	A	
Décorview Crow	3000	3	6%		•	•		13	79	11	10	5	A	
Décorview Obsidian	3000	3	6%		•	•		12	88	4	8	5	A	
Décorview Oyster	2500	4	5%	•	•	•	•	12	25	61	14	5	A	
Décorview Frost	2500	4	5%	•	•	•	•	12	38	49	13	5	A	
Décorview Rock	2500	4	5%	•	•	•	•	9	57	33	10	5	A	
Décorview Granite	2500	4	5%	•	•	•	•	6	82	11	7	5	A	

Décorview® is a registered trademark of SP Blinds Ltd.

*Matching fabric names are listed on the back of applicable fabric swatches.

**Care instructions are explained in the SP Blinds price list booklet.

TOITŪ



Key

- OF Openness Factor** - this factor measures the proportion of holes in a woven fabric. This parameter, together with other technical properties of the fabric, should be considered when determining the degree of visibility, heat and glare control that the fabric offers.
- VLT Visual Light Transmittance** - the percentage of visible light coming through the fabric, that can be seen by the naked eye. A low figure shows a very efficient fabric in reducing glare.
- As Solar Absorbance** - the proportion of solar radiation (heat) absorbed by the fabric. A low figure means the fabric absorbs little solar energy.
- Rs Solar Reflectance** - this factor measures how much solar radiation is reflected by the fabric. A high percentage means the fabric performs well at reflecting solar energy.
- Ts Solar Transmittance** - the proportion of solar energy (heat) transmitted through the fabric. A low percentage means the fabric performs well at reducing solar energy.
- VOC Volatile Organic Compound** - these are organic chemicals that have a high vapour pressure at ordinary room temperature. This causes a large number of molecules to evaporate and enter the surrounding air. A fabric that has been certified for Low VOC Emissions has no, or very low levels of, these chemicals.
- RoHS Restriction of Harmful Substances** - the RoHS directive issued by the EU aims to restrict the use of certain dangerous substances. Any RoHS compliant component is tested for the presence of Lead (Pb), Cadmium (Cd), Mercury (Hg), Hexavalent chromium (Hex-Cr), Polybrominated biphenyls (PBB), and Polybrominated diphenyl ethers (PBDE). For Cadmium and Hexavalent chromium, there must be less than 0.01% of the substance. For Lead, PBB, and PBDE, there must be no more than 0.1% of the material. Any RoHS compliant component must have 100 ppm or less of mercury and the mercury must not have been intentionally added to the component.

www.spblinds.co.nz

