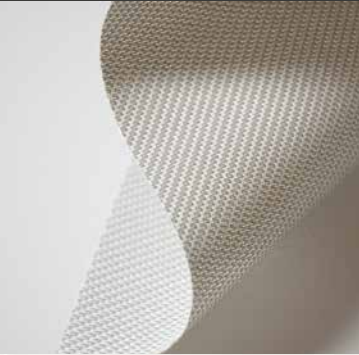


View[®] FR sunscreen fabric

PVC coated woven sunscreen fabrics combine outward visibility with glare and heat protection. Durable and easy to maintain, these fabrics offer a suitable solution for any environment and protection level needed based on the fabric's openness factor and colour.

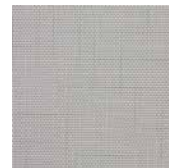
- Made by a manufacturer that is ISO 14001 certified (the highest standard for Environmental Management System).
- Tested and certified for low VOC emissions - no harmful chemicals.
- Highly fire retardant (tested to AS/NZ Part 2 with a flammability Index between 0 and 1).
- Dark colours have a VLT (Visual Light Transmittance) <10.
- PVC Free (does not contain PVC) for fabrics indicated



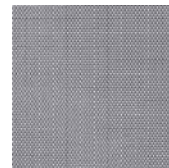
3% Openness



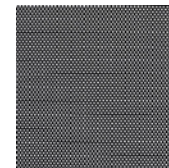
Sail



Sand



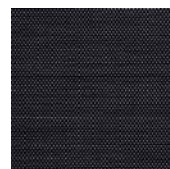
Gull



Orca



Ranguru



Greywacke



Piwakawaka

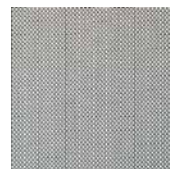


Takahe



Cormorant

5% Openness



Karoro



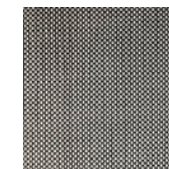
Riverstone



Kiwi



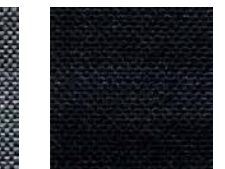
Toutouwai



Monowai



Stone



Schwarz

PVC
FREE

PVC
FREE

5531SP SP Commercial FR Interior Roller Blinds																			
NZGBC Green Star DAB Nzv1.1 12.1B – Glare Control 20.3A – Responsible Building Materials 21C & 21D – Sustainable Products Masterspec Index 1226G0 / 1226GT		NZGBC Green Star INT Nzv1.1 11.1B – Glare Control 20.2A – Responsible Building Materials 21C & 21D – Sustainable Products					DAB Nzv1.1 / INT Nzv1.1 – Credit												
						12.1B / 11.1B		20.3A / 20.2A		21D / 21D		21C / 21C						SP – Potential Contribution Points	
						1 Point		1 Point		1 Point		Towards Schedule							
Fabric Name		Width (mm)	Price Category	Openness Factor (OF)	AS/NZ 1530.2 Flammability Index	Solar Properties			VLT %		PVC	Third Party Certification	Environmental Product Declarations (EPDs)						
						As	Rs	Ts	<10	≥10	PVC Free	Global Greentag	ISO 14001	OEKO-TEX	GREENGUARD	Low VOC	RoHS / Lead Free	100% Trevira CS	
SP View 3% Sail	☑☑	3000	2	3%	1	13	70	17		12			•		•	•	•		1
SP View 3% Sand	☑☑	3000	2	3%	1	29	57	13	9				•		•	•	•		2
SP View 3% Gull	☑☑	3000	2	3%	1	51	40	8	6				•		•	•	•		2
SP View 3% Orca	☑☑	3000	2	3%	1	63	31	6	6				•		•	•	•		2
SP View 3% Ranguru	☑☑	3000	2	3%	1	82	12	5	5				•		•	•	•		2
SP View 3% Greywacke	☑☑	3000	2	3%	1	81	14	5	5				•		•	•	•		2
SP View 3% Piwakawaka	☑☑	3000	2	3%	1	90	6	4	4				•		•	•	•		2
SP View 3% Takahe	☑☑	3000	2	3%	1	91	4	4	4				•		•	•	•		2
SP View 3% Cormorant	☑☑	3200	2	3%	1	93	3	4	5				•		•	•	•		2
SP View 5% Karoro	☑☑	3200	2	5%	1	41	49	10		11			•		•	•	•		1
SP View 5% Riverstone	☑☑	3200	2	5%	1	83	10	7		10			•		•	•	•		1
SP View 5% Kiwi	☑☑	3200	2	5%	1	88	5	7	9				•		•	•	•		2
SP View 5% Toutouwai	☑☑	3000	2	5%	1	92	3	5	7				•		•	•	•		2
SP View 5% Monowai	☑☑	3000	3	5%	1	82	13	5	7				•	•	•	•	•		2
SP View 5% Stone	PVC FREE ☑☑	3000	3	5%	1	55	30	14	8		•		•		•	•	•	50%	3
SP View 5% Schwarz	PVC FREE ☑☑	3000	3	5%	1	73	17	9	6		•		•		•	•	•	50%	3

Eco-friendly

Fire retardant

PVC FREE Does not contain PVC

OF **Openness Factor** – this factor measures the proportion of holes in a woven fabric. This parameter, together with other technical properties of the fabric, should be considered when determining the degree of visibility, heat and glare control that the fabric offers.

AS/NZ 1530.2 Methods for fire tests on building materials, components and structures. Part 2: Test for flammability of materials.

As **Solar Absorbance** – the proportion of solar radiation (heat) absorbed by the fabric. **A low figure** means the fabric absorbs little solar energy.

Rs **Solar Reflectance** – this factor measures how much solar radiation is reflected by the fabric. **A high percentage** means the fabric performs well at reflecting solar energy.

Ts **Solar Transmittance** – the proportion of solar energy (heat) transmitted through the fabric. **A low percentage** means the fabric performs well at reducing solar energy.

VLT% **Visual Light Transmittance** – the percentage of visible light coming through the fabric, that can be seen by the naked eye. **A low figure** shows a very efficient fabric.

ISO 14001 The ISO 14001 standard is the most important international standard specifying the requirements of an Environmental Management System (EMS). Companies who implemented the ISO 14001 standard cannot use any harmful substances in their products.

OEKO-TEX The STANDARD 100 by OEKO-TEX® is a worldwide independent testing and certification system for harmful substances in textile products.

GREEN-GUARD This programme certifies materials for low chemical emissions, based on independent scientific testing and ongoing monitoring.

Global Greentag A third party, green building product rating and certification system, underpinned by rigorous scientific and Life Cycle Assessment (LCA) processes.

VOC **Volatile Organic Compound** – these are organic chemicals that have a high vapour pressure at ordinary room temperature. This causes a large number of molecules to evaporate and enter the surrounding air. A fabric that has been certified for Low VOC Emissions has no, or very low levels of, these chemicals.

RoHS / Lead Free **Restriction of Harmful Substances** – the RoHS directive issued by the EU aims to restrict the use of certain dangerous substances. Any RoHS compliant component is tested for the presence of Lead (Pb), Cadmium (Cd), Mercury (Hg), Hexavalent chromium (Hex-Cr), Polybrominated biphenyls (PBB), and Polybrominated diphenyl ethers (PBDE). For Cadmium and Hexavalent chromium, there must be less than 0.01% of the substance. For Lead, PBB, and PBDE, there must be no more than 0.1% of the material. Any RoHS compliant component must have 100 ppm or less of mercury and the mercury must not have been intentionally added to the component.

Trevira CS Trevira CS is a high spec, eco-friendly type of man-made yarn, which is free of PVC, Halogen and Formaldehyde. It is inherently and permanently fire-retardant thanks to its molecular structure. It stands for textiles made of 100% flame retardant fibres and yarns by Trevira and their partners in the spinning and yarn finishing stages.

NZGBC Green Star DAB Nzv1.1 / INT Nzv1.1 credit

12.1B / 11.1B **Glare Control** – this credit rewards it using internal blinds. The nominated SP Blinds fabrics have a VLT less than 10% and can contribute towards a point, provided all the design details are in accordance with the Technical Manual.

20.3A / 20.2A **Responsible Building Materials** – 1 point is available where 90% (by cost) of all permanent formwork, pipes, flooring, blinds and cables in a project either:

- do not contain PVC and have a recognised product declaration;
- OR meet the GBCA's Best Practice Guidelines for PVC.

21C, 21D / 21C, 21D **Sustainable Products** – up to 3 points are available when a proportion of all materials used in the project meet transparency and sustainability requirements under the initiatives.

