

The SP60/80 Heavy Duty roller blind system can be controlled by chain, motor or crank. Its chain control is designed to lift blinds of up to 25 kg while maintaining a strong pull force of less than 3 kg. The motors can be controlled by wall remote, hand-held remote, Smartphone App, Home Automation System (HAS) or Building Management System (BMS).

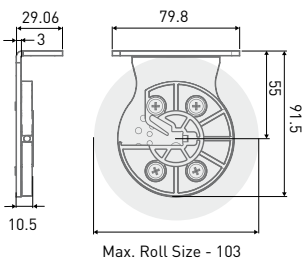
General information

Minimum blind width (chain control)	350mm
Minimum blind width (motorised)	745mm
Maximum blind width (SP60)	3500mm
Maximum blind width (SP80)	4000mm
Maximum blind drop	7000mm
Linking blinds	up to 3
Bend link	up to 90°
Duo blind system	allowing installation of two layers of blinds in the same window
Retrofit spring assist booster	for easy lifting of heavy blinds
Total Block	fully enclosed aluminium cassette box and side channels
Automation	230V RTS or Non-RTS motors, controlled by remote, App, HAS or BMS

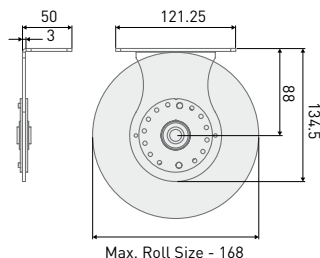


Technical information

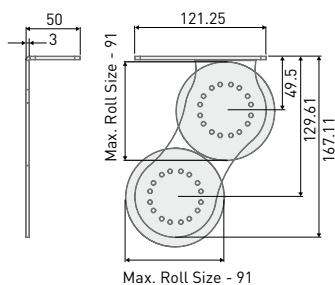
SP60 bracket dimensions



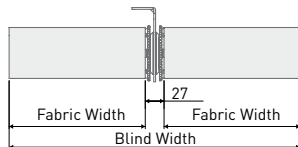
SP80 bracket dimensions



Duo bracket dimensions



Linked blinds deductions



Deductions from window measurements



Specifications

Brackets

- Press formed steel, pre-treated and powder coated
- Top and face fix
- Colours: white; black

Head tube

- Extruded aluminium
- Diameter: 60mm; 80mm

Base Bar

- Extruded aluminium
- Type: heavy duty square
- Colours: anodised; white; sandstone; black; custom painted

Chain control

- Direct action, dual reverse clutch
- Colours: white; black

Idler

- ABS, nylon & acetal with steel roller bearings
- Safety lock metal pin on square shaft
- Colour: white; black

Motorisation

- 230V tubular motors
- Standard and silent motors
- Controls: wall remote; hand-held remote; Smartphone App; HAS; BMS