

BK04

# **RB09 Chain Winder System**

S45

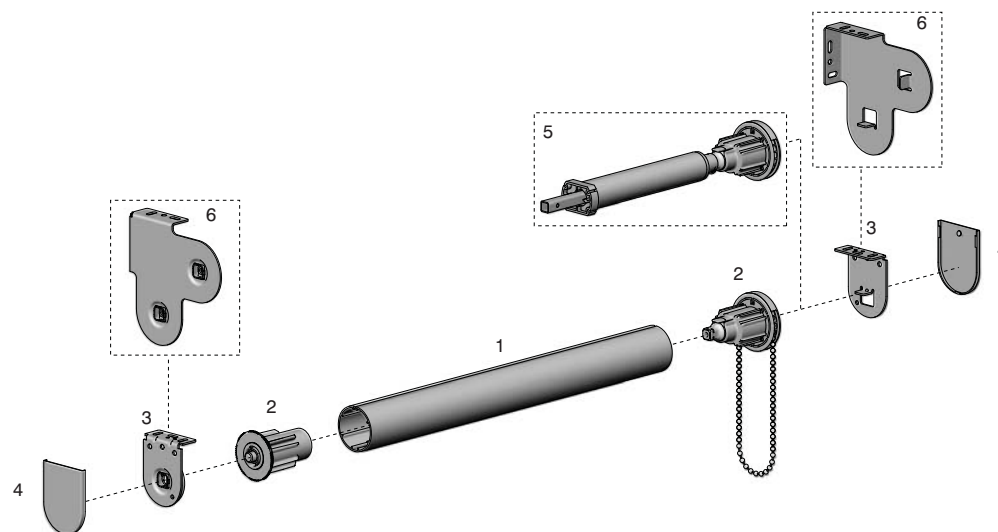
MANUFACTURING MANUAL

AUG 2013



RB09 CHAIN WINDER SYSTEM - SCHEMATIC

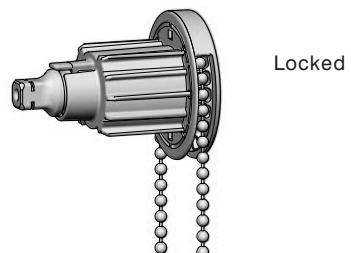
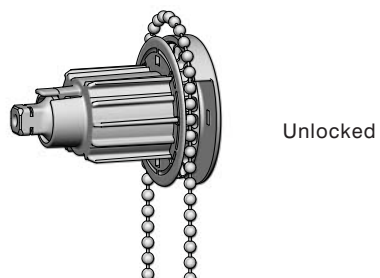
CONTENTS		
SECTION	DESCRIPTION	PAGE NO.
PART A	CHAIN WINDER ASSEMBLY	4
PART B	BOOSTER ATTACHMENT	5
PART C	BLIND ASSEMBLY	6 - 7
PART D	PRE TENSION CHARTS	8-10
PART E	COMPONENT DIMENSIONS / DEDUCTIONS	11 - 13
PART F	MATERIAL SPECIFICATIONS	14



RB09 CHAIN WINDER SYSTEM - SCHEMATIC		
ITEM NO.	DESCRIPTION	QTY
1	Aluminium Tube • S45	1
2	RB09 Chain Winder & Extended Idler	1
3	RB09 LX Easy-Lock Bracket	1
4	LX Bracket Cover Caps	1
5	Easy-Lift Retro-Fit Booster • S45	1
6	Combo SQUARE-X Easy-Lock Brkts • Same Side Control	1

## PLACE CHAIN INTO WINDER

The RB09 Chain winder is supplied in the unlocked position as shown below. Insert chain and lock into position by applying pressure on both pieces

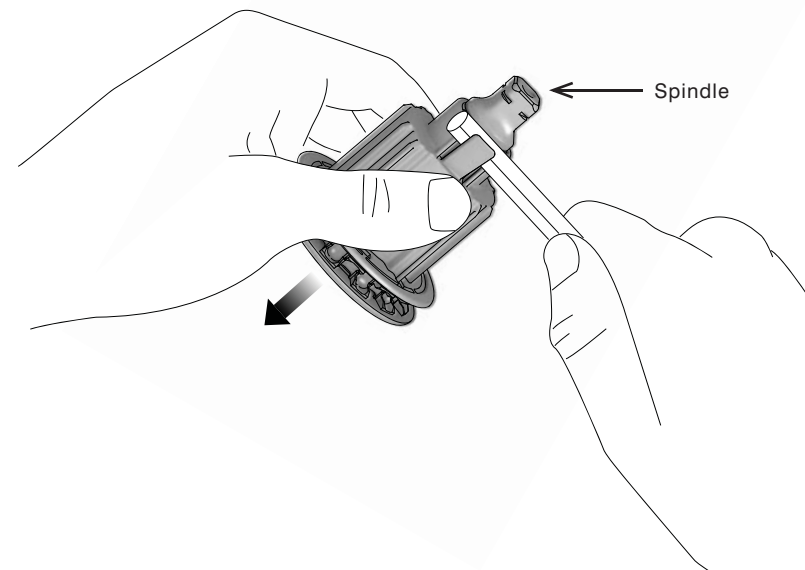


## UNLOCKING CHAIN WINDER

To unlock the chain winder;

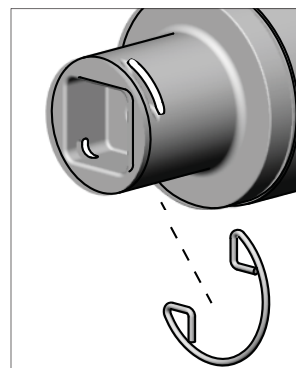
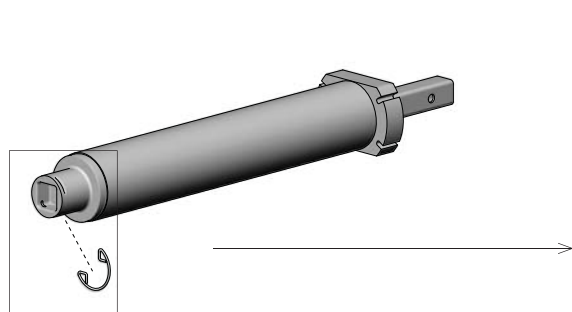
- i) Hold jacket to keep stationary (Do not hold onto spindle).
- ii) Using a pencil, apply downward pressure to disengage clip from spindle.

Chain Wheel is now accesssable.

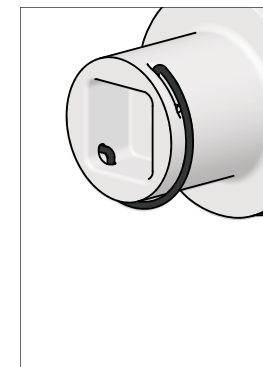


## STEP 1 - ATTACH CLIP TO BOOSTER

Attach Seegar clip to booster [provided].



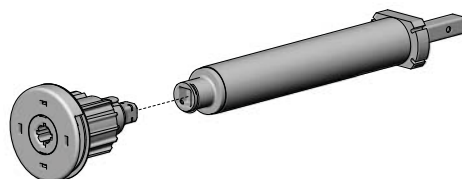
Ensure seegar clip sits into allocated slots.



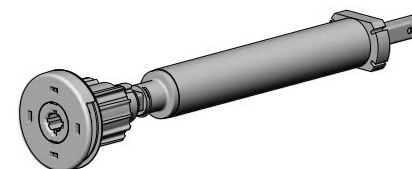
Assembled.

## STEP 2 - ATTACHING WINDER TO BOOSTER

Push RB09 Chain winder onto booster ensuring Seegar clip engages.  
[Click will be heard once engaged]



Chain winder correctly attached onto booster.



## COMPLETE

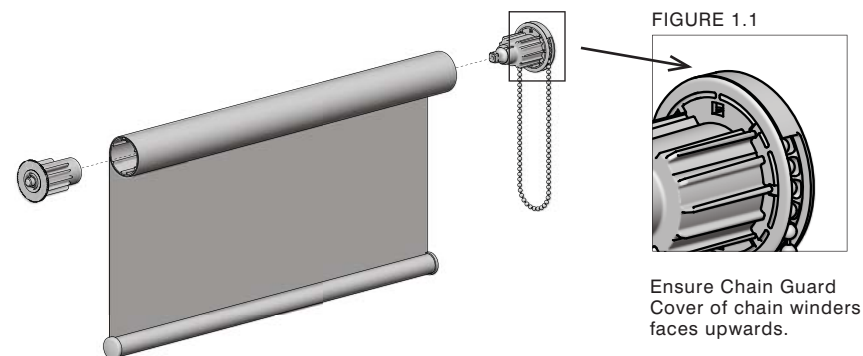
## STEP 1 - MOUNT BRACKETS

Mount Easy-Lock Installation brackets in desired position to wall or ceiling with screws.



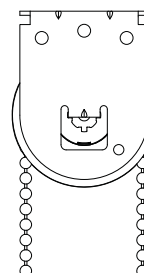
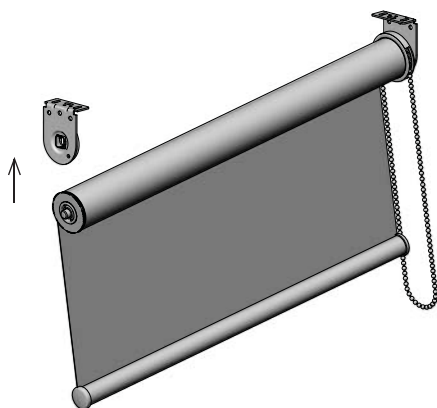
## STEP 2 - INSERT MECHANISM INTO TUBE

Insert Chain Winder and Extended Idler into tube.  
Ensure chain is inserted into winder. *Refer chain winder assembly instructions.*



## STEP 3 - MOUNT CONTROL END

Mount chain winder onto control bracket with the chain guard positioned as shown in Figure 1.1.



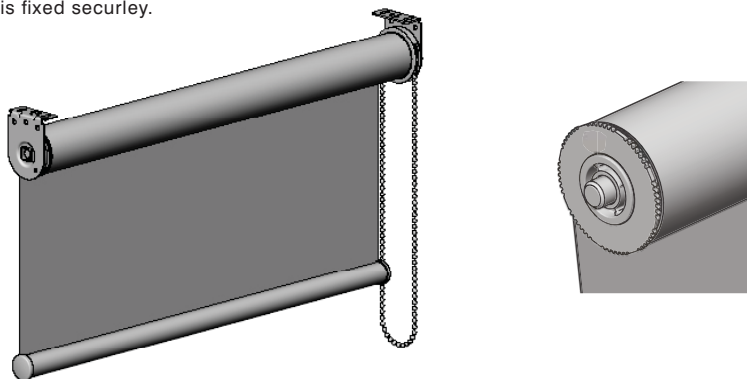
Ensure the tongue on control bracket sits inside groove of chain winder all the way.

## STEP 4 - MOUNT IDLE END

Mount extendable idler onto idle End bracket ensuring the pin is in the standard install position (Refer Page 11) prior to installation.

When the idle end is engaged with the idle end bracket a click will be heard.

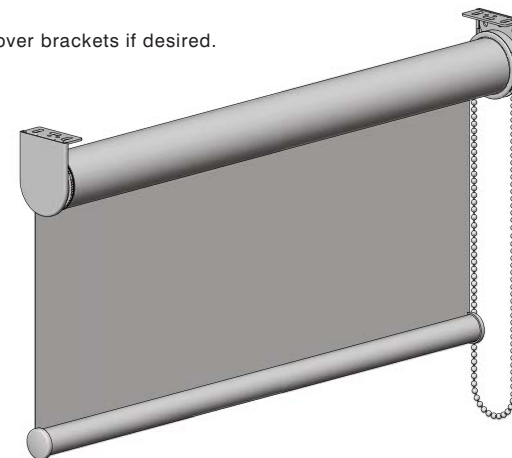
Ensure blind is fixed securely.



## STEP 5 - ATTACH END COVERS

OPTIONAL:

Slide bracket covers over brackets if desired.



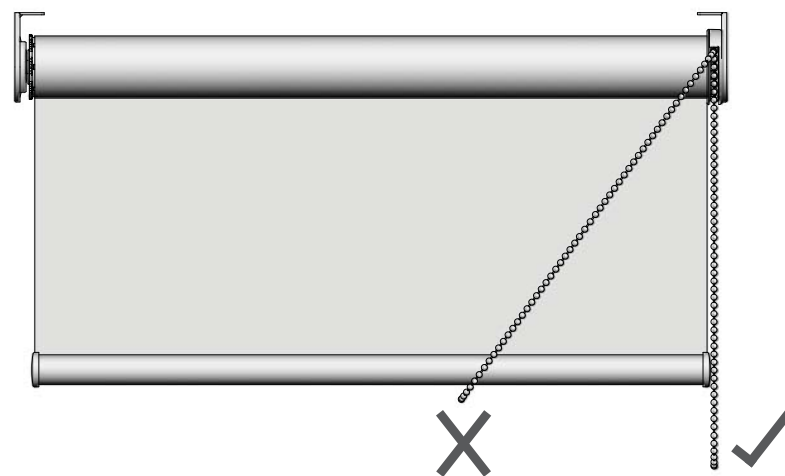
## CORRECT OPERATION

When operating the chain winder, the chain should be held in a vertical position.

For a smooth operation hold both sides of chain in tension.

This will ensure:

- The fabric does not get damaged.
- Noise reduction during operation.
- The blind will lift evenly.



## SPECIFICATIONS:

- SYS45 LIGHT ALUMINIUM TUBE
- 22MM BOTTOM RAIL
- FABRIC - 450 G/M2

(For Fabric 650 g/m2 please refer to Technical Support)

Booster Capacity Chart					Tube = ø43.25				Fabric = 450 g/m2 x 0.5 mm thick								Weight Bar = 0.27 kg/m								Standard		Heavy		Double Standard			Double Heavy			
Wraps	H/W	800	1000	1200	1400	1600	1800	2000	2200	2400	2600	2800	3000	3200	3400	3600	3800	4000	4200	4400	4600	4800	5000	5200	5400	5600	5800	6000	W/H						
4	500		3	4	4	4	5	6	7	3	3	4	4	4	4	5	5	5	5	6	6	6	6	7	7	7	7	4	4	500					
4	600		3	4	4	4	5	6	7	3	3	4	4	4	4	5	5	5	5	6	6	6	6	7	7	7	7	4	4	600					
5	700		3	4	4	4	5	6	7	3	3	4	4	4	4	5	5	5	5	6	6	6	6	7	7	7	7	4	4	700					
6	800		3	4	4	4	5	6	7	3	3	4	4	4	4	5	5	5	5	6	6	6	6	7	7	7	7	4	4	800					
6	900		3	4	4	4	5	6	7	3	3	4	4	4	4	5	5	5	5	6	6	6	6	7	7	7	7	4	4	900					
7	1000		3	4	4	5	5	6	7	3	4	4	4	4	4	5	5	5	6	6	6	6	7	7	7	7	7	4	4	1000					
7	1100		3	4	4	5	5	6	7	3	4	4	4	4	4	5	5	5	6	6	6	6	7	7	7	7	7	4	4	1100					
8	1200		3	4	4	5	5	6	7	3	4	4	4	4	4	5	5	5	6	6	6	6	7	7	7	7	7	4	4	1200					
9	1300		3	4	4	5	5	6	7	3	4	4	4	4	4	5	5	5	6	6	6	6	7	7	7	7	7	4	4	1300					
9	1400		3	4	4	5	5	6	7	3	3	4	4	4	4	5	5	5	6	6	6	6	7	7	7	8	4	4	4	1400					
10	1500		3	4	4	5	5	6	7	3	4	4	4	4	4	5	5	5	6	6	6	6	7	7	7	8	4	4	4	1500					
10	1600		3	4	4	5	6	6	7	3	4	4	4	4	4	5	5	5	6	6	6	6	7	7	7	8	4	4	4	1600					
11	1700		4	4	4	5	6	6	7	3	4	4	4	4	4	5	5	5	6	6	6	6	7	7	7	7	7	4	4	1700					
12	1800		4	4	4	5	6	6	7	3	4	4	4	4	4	5	5	5	6	6	6	6	7	7	7	8	4	4	4	1800					
12	1900		4	4	4	5	6	6	7	3	4	4	4	4	4	5	5	5	6	6	6	6	7	7	7	8	4	4	4	1900					
13	2000		4	4	4	5	6	7	7	3	4	4	4	4	4	5	5	5	6	6	6	6	7	7	7	8	4	4	4	2000					
13	2100		4	4	4	5	6	7	7	3	4	4	4	4	4	5	5	5	6	6	6	6	7	7	7	8	8	4	4	2100					
14	2200		4	4	4	5	6	7	7	3	4	4	4	4	4	5	5	5	6	6	6	6	7	7	7	8	4	4	4	2200					
14	2300		4	4	4	5	6	7	7	4	4	4	4	4	4	5	5	5	6	6	6	6	7	7	7	8	4	4	4	2300					
15	2400		4	5	5	6	7	8	4	4	4	4	4	4	4	5	5	5	6	6	6	6	7	7	7	8	4	4	4	2400					
16	2500		4	5	5	6	7	8	4	4	4	4	4	4	4	5	5	5	6	6	6	6	7	7	7	8	4	4	4	2500					
16	2600		4	5	5	6	7	8	4	4	4	4	4	4	4	5	5	5	6	6	6	6	7	7	7	8	4	4	4	2600					
17	2700		4	5	5	6	7	8	4	4	4	4	4	4	4	5	5	5	6	6	6	6	7	7	7	8	4	4	4	2700					
17	2800		4	5	5	6	7	8	4	4	4	4	4	4	4	5	5	5	6	6	6	6	7	7	7	8	4	4	4	2800					
18	2900	3	4	5	6	6	7	8	4	4	4	4	4	4	4	5	5	5	6	6	6	6	7	7	7	8	4	4	4	2900					
18	3000	3	4	5	6	6	7	8	4	4	4	4	4	4	4	5	5	5	6	6	6	6	7	7	7	8	4	4	4	3000					
19	3100	3	4	5	6	6	7	8	4	4	4	4	4	4	4	5	5	5	6	6	6	6	7	7	7	8	4	4	4	3100					
19	3200	3	4	5	6	6	7	8	4	4	4	4	4	4	4	5	5	5	6	6	6	6	7	7	7	8	4	4	4	3200					
20	3300	3	4	5	6	6	7	8	4	4	4	4	4	4	4	5	5	5	6	6	6	6	7	7	7	8	4	4	4	3300					
20	3400	3	4	5	6	7	7	8	4	4	4	4	4	4	4	5	5	5	6	6	6	6	7	7	7	8	4	4	4	3400					
21	3500	3	4	5	6	7	7	8	4	4	4	4	4	4	4	5	5	5	6	6	6	6	7	7	7	8	4	4	4	3500					
21	3600	3	4	5	6	7	7	8	4	4	4	4	4	4	4	5	5	5	6	6	6	6	7	7	7	8	4	4	4	3600					
22	3700	3	4	5	6	7	8	4	4	4	4	4	4	4	4	5	5	5	6	6	6	6	7	7	7	8	4	4	4	3700					
22	3800	3	4	5	6	7	8	4	4	4	4	4	4	4	4	5	5	5	6	6	6	6	7	7	7	8	4	4	4	3800					
23	3900	3	4	5	6	7	8	4	4	4	4	4	4	4	4	5	5	5	6	6	6	6	7	7	7	8	4	4	4	3900					
23	4000	3	4	5	6	7	8	4	4	4	4	4	4	4	4	5	5	5	6	6	6	6	7	7	7	8	4	4	4	4000					
24	4100	3	4	5	6	7	8	4	4	4	4	4	4	4	4	5	5	5	6	6	6	6	7	7	7	8	4	4	4	4100					
24	4200	3	4	5	6	7	8	4	4	4	4	4	4	4	4	5	5	5	6	6	6	6	7	7	7	8	4	4	4	4200					
25	4300	4	4	5	6	7	8	4	4	4	4	4	4	4	4	5	5	5	6	6	6	6	7	7	7	8	4	4	4	4300					
25	4400	4	4	5	6	7	8	4	4	4	4	4	4	4	4	5	5	5	6	6	6	6	7	7	7	8	4	4	4	4400					
25	4500	4	4	5	6	7	8	4	4	4	4	4	4	4	4	5	5	5	6	6	6	6	7	7	7	8	4	4	4	4500					
26	4600	4	4	5	6	7	8	4	4	4	4	4	4	4	4	5	5	5	6	6	6	6	7	7	7	8	4	4	4	4600					
26	4700	4	4	5	6	7	8	4	4	4	4	4	4	4	4	5	5	5	6	6	6	6	7	7	7	8	4	4	4	4700					
27	4800	4	5	5	6	7	8	4	4	4	4	4	4	4	4	5	5	5	6	6	6	6	7	7	7	8	4	4	4	4800					
27	4900	4	5	5	6	7	8	4	4	4	4	4	4	4	4	5	5	5	6	6	6	6	7	7	7	8	4	4	4	4900					
28	5000	4	5	5	6	7	8	4	4	4	4	4	4	4	4	5	5	5	6	6	6	6	7	7	7	8	4	4	4	5000					
28	5100	4	5	6	6	7	8	4	4	4	4	4	4	4	4	5	5	5	6	6	6	6	7	7	7	8	4	4	4	5100					
29	5200	4	5	6	6	7	8	4	4	4	4	4	4	4	4	5	5	5	6	6	6	6	7	7	7	8	4	4	4	5200					
29	5300	4	5	6	7	7	8	4	4	4	4	4	4	4	4	5	5	5	6	6	6	6	7	7	7	8	4	4	4	5300					
30	5400	4	5	6	7	8	4	4	4	4	4	4	4	4	4	5	5	5	6	6	6	6	7	7	7	8	4	4	4	5400					
30	5500	4	5	6	7	8	4	4	4	4	4	4	4	4	4	5	5	5	6	6	6	6	7	7	7	8	4	4	4	5500					
30	5600	4	5	6	7	8	4	4	4	4	4	4	4	4	4	5	5	5	6	6	6	6	7	7	7	8	4	4	4	5600					
31	5700	4	5	6	7	8	4	4	4	4	4	4	4	4	4	5	5	5	6	6	6	6	7	7	7	8	4	4	4	5700					
31	5800	4	5	6	7	8	4	4	4	4	4	4	4																						



## SPECIFICATIONS:

- SYS45 STD ALUMINIUM TUBE
- 22MM BOTTOM RAIL
- FABRIC - 450 G/M2

(For Fabric 650 g/m2 please refer to Technical Support)

Booster Capacity Chart					Tube = ø44					Fabric = 450 g/m2 x 0.5 mm thick					Weight Bar = 0.27 kg/m					Standard		Heavy		Double Standard		Double Heavy					
Wraps	H/W	800	1000	1200	1400	1600	1800	2000	2200	2400	2600	2800	3000	3200	3400	3600	3800	4000	4200	4400	4600	4800	5000	5200	5400	5600	5800	6000	W/H		
4	500		3	4	4	5	5	6	7	3	3	4	4	4	4	5	5	5	5	6	6	6	7	7	7	4	4	4	4	500	
4	600		3	4	4	5	6	6	7	3	3	4	4	4	4	5	5	5	5	6	6	6	6	7	7	4	4	4	4	600	
5	700		3	4	4	5	6	6	7	3	3	4	4	4	4	5	5	5	5	6	6	6	6	7	7	4	4	4	4	700	
6	800		3	4	4	5	6	6	7	3	3	4	4	4	4	5	5	5	5	6	6	6	6	7	7	4	4	4	4	800	
6	900		3	4	4	5	5	6	6	7	3	4	4	4	4	5	5	5	5	6	6	6	6	7	7	4	4	4	4	900	
7	1000		3	4	4	5	5	6	7	3	3	4	4	4	4	5	5	5	5	6	6	6	6	7	7	4	4	4	4	1000	
7	1100		3	4	4	5	5	6	7	3	3	4	4	4	4	5	5	5	5	6	6	6	6	7	7	4	4	4	4	1100	
8	1200		3	4	4	5	5	6	7	3	3	4	4	4	4	5	5	5	5	6	6	6	6	7	7	4	4	4	4	1200	
9	1300		3	4	4	5	5	6	7	3	3	4	4	4	4	5	5	5	5	6	6	6	6	7	7	4	4	4	4	1300	
9	1400		3	4	4	5	5	6	7	3	3	4	4	4	4	5	5	5	5	6	6	6	6	7	7	4	4	4	4	1400	
10	1500		3	4	4	5	5	6	7	3	3	4	4	4	4	5	5	5	5	6	6	6	6	7	7	4	4	4	4	1500	
10	1600		4	4	4	5	6	6	7	3	4	4	4	4	4	5	5	5	5	6	6	6	6	7	7	4	4	4	4	1600	
11	1700		4	4	4	5	6	6	7	3	4	4	4	4	4	5	5	5	5	6	6	6	6	7	7	4	4	4	4	1700	
12	1800		4	4	4	5	6	6	7	3	4	4	4	4	4	5	5	5	5	6	6	6	6	7	7	4	4	4	4	1800	
12	1900		4	4	4	5	6	7	7	3	4	4	4	4	4	5	5	5	5	6	6	6	6	7	7	4	4	4	4	1900	
13	2000		4	4	4	5	6	7	7	3	4	4	4	4	4	5	5	5	5	6	6	6	6	7	7	8	4	4	4	4	2000
13	2100		4	4	4	5	6	7	7	3	4	4	4	4	4	5	5	5	5	6	6	6	6	7	7	8	4	4	4	4	2100
14	2200		4	4	4	5	6	7	7	3	4	4	4	4	4	5	5	5	5	6	6	6	6	7	7	8	4	4	4	4	2200
14	2300		4	4	5	5	6	7	8	4	4	4	4	4	4	5	5	5	5	6	6	6	6	7	7	8	4	4	4	4	2300
15	2400		4	4	5	5	6	7	3	3	4	4	4	4	4	5	5	5	5	6	6	6	6	7	7	8	4	4	4	4	2400
16	2500		4	4	5	5	6	7	3	3	4	4	4	4	4	5	5	5	5	6	6	6	6	7	7	8	4	4	4	4	2500
16	2600		4	4	5	5	6	7	3	3	4	4	4	4	4	5	5	5	5	6	6	6	6	7	7	8	4	4	4	4	2600
17	2700		4	4	5	5	6	7	3	3	4	4	4	4	4	5	5	5	5	6	6	6	6	7	7	8	4	4	4	4	2700
17	2800		4	4	5	6	6	7	3	3	4	4	4	4	4	5	5	5	5	6	6	6	6	7	7	8	4	4	4	4	2800
18	2900		4	4	5	6	6	7	3	3	4	4	4	4	4	5	5	5	5	6	6	6	6	7	7	8	4	4	4	4	2900
18	3000		4	4	5	6	6	7	3	3	4	4	4	4	4	5	5	5	5	6	6	6	6	7	7	8	4	4	4	4	3000
19	3100		4	4	5	6	6	7	3	3	4	4	4	4	4	5	5	5	5	6	6	6	6	7	7	8	4	4	4	4	3100
19	3200		4	4	5	6	6	7	3	3	4	4	4	4	4	5	5	5	5	6	6	6	6	7	7	8	4	4	4	4	3200
20	3300		4	4	5	6	7	7	4	4	4	4	4	4	4	5	5	5	5	6	6	6	6	7	7	8	4	4	4	4	3300
20	3400		4	4	5	6	7	7	4	4	4	4	4	4	4	5	5	5	5	6	6	6	6	7	7	8	4	4	4	4	3400
21	3500		4	4	5	6	7	7	4	4	4	4	4	4	4	5	5	5	5	6	6	6	6	7	7	8	4	4	4	4	3500
21	3600		4	4	5	6	7	8	4	4	4	4	4	4	4	5	5	5	5	6	6	6	6	7	7	8	4	4	4	4	3600
22	3700	3	4	4	5	6	7	8	4	4	4	4	4	4	4	5	5	5	5	6	6	6	6	7	7	8	4	4	4	4	3700
22	3800	3	4	4	5	6	7	8	4	4	4	4	4	4	4	5	5	5	5	6	6	6	6	7	7	8	4	4	4	4	3800
23	3900	3	4	4	5	6	7	8	4	4	4	4	4	4	4	5	5	5	5	6	6	6	6	7	7	8	4	4	4	4	3900
23	4000	3	4	4	5	6	7	8	4	4	4	4	4	4	4	5	5	5	5	6	6	6	6	7	7	8	4	4	4	4	4000
24	4100	3	4	4	5	6	7	8	4	4	4	4	4	4	4	5	5	5	5	6	6	6	6	7	7	8	4	4	4	4	4100
24	4200	4	4	4	5	6	7	8	4	4	4	4	4	4	4	5	5	5	5	6	6	6	6	7	7	8	4	4	4	4	4200
25	4300	4	4	4	5	6	7	8	4	4	4	4	4	4	4	5	5	5	5	6	6	6	6	7	7	8	4	4	4	4	4300
25	4400	4	4	4	5	6	7	8	4	4	4	4	4	4	4	5	5	5	5	6	6	6	6	7	7	8	4	4	4	4	4400
25	4500	4	4	4	5	6	7	3	3	3	4	4	4	4	4	5	5	5	5	6	6	6	6	7	7	8	4	4	4	4	4500
26	4600	4	4	4	5	6	7	3	3	3	4	4	4	4	4	5	5	5	5	6	6	6	6	7	7	8	4	4	4	4	4600
26	4700	4	4	5	5	6	7	3	3	3	4	4	4	4	4	5	5	5	5	6	6	6	6	7	7	8	4	4	4	4	4700
27	4800	4	4	5	5	6	7	4	4	4	4	4	4	4	4	5	5	5	5	6	6	6	6	7	7	8	4	4	4	4	4800
27	4900	4	4	5	6	6	7	4	4	4	4	4	4	4	4	5	5	5	5	6	6	6	6	7	7	8	4	4	4	4	4900
28	5000	4	4	5	6	6	7	4	4	4	4	4	4	4	4	5	5	5	5	6	6	6	6	7	7	8	4	4	4	4	5000
28	5100	4	4	5	6	6	7	4	4	4	4	4	4	4	4	5	5	5	5	6	6	6	6	7	7	8	4	4	4	4	5100
29	5200	4	4	5	6	7	7	4	4	4	4	4	4	4	4	5	5	5	5	6	6	6	6	7	7	8	4	4	4	4	5200
29	5300	4	4	5	6	7	8	4	4	4	4	4	4	4	4	5	5	5	5	6	6	6	6	7	7	8	4	4	4	4	5300
30	5400	4	4	5	6	7	8	4	4	4	4	4	4	4	4	5	5	5	5	6	6	6	6	7	7	8	4	4	4	4	5400
30	5500	4	4	5	6	7	8	4	4	4	4	4	4	4	4	5	5	5	5	6	6	6	6	7	7	8	4	4	4	4	5500
30	5600	4	4	5	6	7	8	4	4	4	4	4	4	4	4	5	5	5	5	6	6	6	6	7	7	8	4	4	4	4	5600
</																															

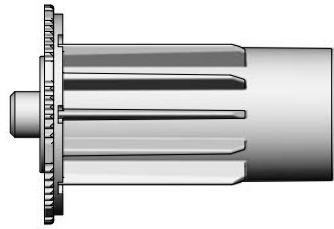
## SPECIFICATIONS:

- SYS45 HEAVY DUTY ALUMINIUM TUBE
- 22MM BOTTOM RAIL
- FABRIC - 450 G/M2

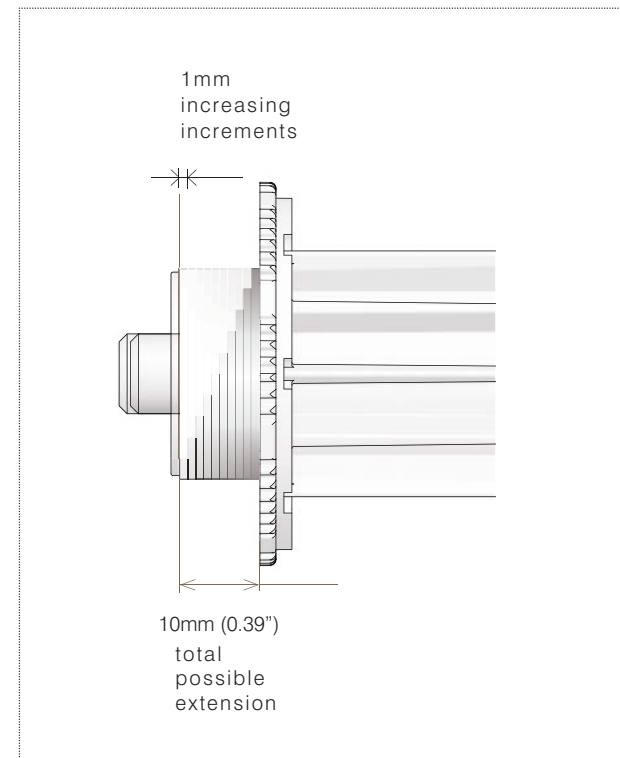
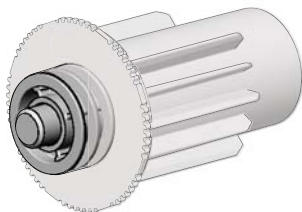
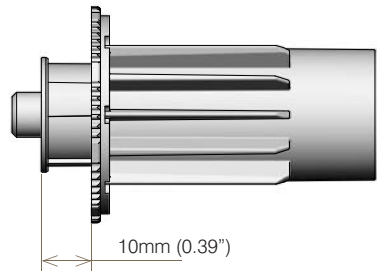
(For Fabric 650 g/m2 please refer to Technical Support)

Booster Capacity Chart					Tube = ø49					Fabric = 450 g/m2 x 0.5 mm thick					Weight Bar = 0.27 kg/m					Standard		Heavy		Double Standard		Double Heavy		W/H	
Wraps	H/W	800	1000	1200	1400	1600	1800	2000	2200	2400	2600	2800	3000	3200	3400	3600	3800	4000	4200	4400	4600	4800	5000	5200	5400	5600	5800	6000	
3	500	3	3	4	5	5	6	3	3	3	4	4	4	5	5	5	5	6	6	3	3	3	4	4	4	4	4	4	500
4	600	3	3	4	5	5	3	3	3	3	4	4	4	5	5	5	5	6	6	6	3	3	4	4	4	4	4	4	600
4	700	3	3	4	5	5	3	3	3	4	4	4	4	5	5	5	5	6	6	6	3	3	4	4	4	4	4	4	700
5	800	3	3	4	5	6	3	3	3	4	4	4	4	5	5	5	5	6	6	6	3	3	4	4	4	4	4	4	800
6	900	3	4	4	5	6	3	3	3	4	4	4	4	5	5	5	5	6	6	6	3	3	4	4	4	4	4	5	900
6	1000	3	4	4	5	6	3	3	3	4	4	4	4	5	5	5	5	6	6	6	3	3	4	4	4	4	4	5	1000
7	1100	3	4	4	5	6	3	3	3	4	4	4	4	5	5	5	5	6	6	6	3	3	4	4	4	4	4	5	1100
7	1200	3	4	4	5	6	3	3	3	4	4	4	4	5	5	5	5	6	6	6	3	3	4	4	4	4	4	5	1200
8	1300	3	4	4	5	6	3	3	3	4	4	4	4	5	5	5	5	6	6	6	3	3	4	4	4	4	4	5	1300
8	1400	3	4	4	5	6	3	3	3	4	4	4	4	5	5	5	5	6	6	6	3	3	4	4	4	4	4	5	1400
9	1500	3	4	4	5	6	3	3	4	4	4	4	4	5	5	5	5	6	6	6	3	4	4	4	4	4	4	5	1500
10	1600	3	4	5	5	6	3	3	4	4	4	4	4	5	5	5	5	6	6	6	3	4	4	4	4	4	4	5	1600
10	1700	3	4	5	5	6	3	3	4	4	4	4	4	5	5	5	5	6	6	7	3	4	4	4	4	4	5	5	1700
11	1800	3	4	5	5	6	3	3	4	4	4	4	4	5	5	5	5	6	6	6	3	3	4	4	4	4	4	5	1800
11	1900	3	4	5	5	6	3	3	4	4	4	4	4	5	5	5	5	6	6	6	3	3	4	4	4	4	4	5	1900
12	2000	3	4	5	5	6	3	3	4	4	4	4	4	5	5	5	5	6	6	6	3	4	4	4	4	4	4	5	2000
12	2100	3	4	5	6	6	3	3	4	4	4	4	4	5	5	5	5	6	6	6	3	4	4	4	4	4	4	5	2100
13	2200	3	4	5	6	6	3	3	4	4	4	4	4	5	5	5	5	6	6	6	3	4	4	4	4	4	4	5	2200
13	2300	3	4	5	6	6	3	3	4	4	4	4	4	5	5	5	5	6	6	7	3	4	4	4	4	4	4	5	2300
14	2400	3	4	5	6	6	3	3	4	4	4	4	4	5	5	5	5	6	6	7	3	4	4	4	4	4	4	5	2400
14	2500	3	4	5	6	7	3	3	4	4	4	4	4	5	5	5	5	6	6	7	3	4	4	4	4	4	4	5	2500
15	2600	3	4	5	6	7	3	3	4	4	4	4	4	5	5	5	5	6	6	7	4	4	4	4	4	4	4	5	2600
15	2700	3	4	5	6	7	3	3	4	4	4	4	4	5	5	5	5	6	6	7	4	4	4	4	4	4	4	5	2700
16	2800	3	4	5	6	7	3	3	4	4	4	4	4	5	5	5	5	6	6	7	4	4	4	4	4	4	4	5	2800
16	2900	3	4	5	6	7	3	3	4	4	4	4	4	5	5	5	5	6	6	7	3	4	4	4	4	4	4	5	2900
17	3000	3	4	5	6	7	3	3	4	4	4	4	4	5	5	5	5	6	6	7	3	4	4	4	4	4	4	5	3000
17	3100	3	4	5	6	7	3	3	4	4	4	4	4	5	5	5	5	6	6	7	3	4	4	4	4	4	4	5	3100
18	3200	3	4	5	6	7	3	3	4	4	4	4	4	5	5	5	5	6	6	7	3	4	4	4	4	4	4	5	3200
18	3300	3	4	5	6	7	3	3	4	4	4	4	4	5	5	5	5	6	6	7	4	4	4	4	4	4	4	5	3300
19	3400	3	4	5	6	7	3	3	4	4	4	4	4	5	5	5	5	6	6	7	4	4	4	4	4	4	4	5	3400
19	3500	4	4	5	6	7	3	3	4	4	4	4	4	5	5	5	5	6	6	7	4	4	4	4	4	4	4	5	3500
20	3600	4	4	5	6	7	3	3	4	4	4	4	4	5	5	5	5	6	6	7	4	4	4	4	4	4	4	5	3600
20	3700	4	4	5	6	7	3	3	4	4	4	4	4	5	5	5	5	6	6	7	4	4	4	4	4	4	4	5	3700
21	3800	4	4	5	6	7	3	3	4	4	4	4	4	5	5	5	5	6	6	7	4	4	4	4	4	4	4	5	3800
21	3900	4	5	5	6	7	3	3	4	4	4	4	4	5	5	5	5	6	6	7	7	4	4	4	4	4	4	5	3900
21	4000	4	5	5	6	7	3	3	4	4	4	4	4	5	5	5	5	6	6	7	7	4	4	4	4	4	4	5	4000
22	4100	4	5	5	6	7	3	4	4	4	4	4	4	5	5	5	5	6	6	7	4	4	4	4	4	4	4	5	4100
22	4200	4	5	6	6	7	3	4	4	4	4	4	4	5	5	5	5	6	6	7	4	4	4	4	4	4	4	5	4200
23	4300	4	5	6	6	7	3	4	4	4	4	4	4	5	5	5	5	6	6	7	4	4	4	4	4	4	4	5	4300
23	4400	4	5	6	7	7	3	4	4	4	4	4	4	5	5	5	5	6	6	7	4	4	4	4	4	4	4	5	4400
24	4500	4	5	6	7	7	3	4	4	4	4	4	4	5	5	5	5	6	6	7	4	4	4	4	4	4	4	5	4500
24	4600	4	5	6	7	7	3	4	4	4	4	4	4	5	5	5	5	6	6	7	4	4	4	4	4	4	4	5	4600
25	4700	4	5	6	7	7	3	4	4	4	4	4	4	5	5	5	5	6	6	7	4	4	4	4	4	4	4	5	4700
25	4800	4	5	6	7	7	3	4	4	4	4	4	4	5	5	5	5	6	6	7	4	4	4	4	4	4	4	5	4800
25	4900	4	5	6	7	7	3	4	4	4	4	4	4	5	5	5	5	6	6	7	7	4	4	4	4	4	4	5	4900
26	5000	4	5	6	7	7	3	4	4	4	4	4	4	5	5	5	5	6	6	7	7	4	4	4	4	4	4	5	5000
26	5100	4	5	6	7	7	3	4	4	4	4	4	4	5	5	5	5	6	6	7	7	4	4	4	4	4	4	5	5100
27	5200	4	5	6	7	7	3	4	4	4	4	4	4	5	5	5	5	6	6	7	7	4	4	4	4	4	4	5	5200
27	5300	4	5	6	7	7	3	4	4	4	4	4	4	5	5	5	5	6	6	7	4	4	4	4	4	4	4	5	5300
28	5400	4	5	6	7	7	3	4	4	4	4	4	4	5	5	5	5	6	6	7	4	4	4	4	4	4	4	5	5400
28	5500	4	5	6	7	7	3	4	4	4	4	4	4	5	5	5	5	6	6	7	4	4	4	4	4	4	4	5	5500
28	5600	4	5	6	7	7	3	4	4	4	4	4	4	5	5	5	5	6	6	7	4	4	4	4	4	4	4	5	5600
29	5700	4	5	6	7	7	3	4	4	4	4	4	4	5	5	5	5	6	6	7	4	4	4	4	4	4	4	5	5700
29	5800	4	5	6	7	7	3	4	4	4	4	4	4	5	5	5	5	6	6	7	4	4	4	4	4	4	4	5	5800
30	5900	4	5	6	7	7	3	4	4	4	4	4	4	5	5	5	5	6	6										

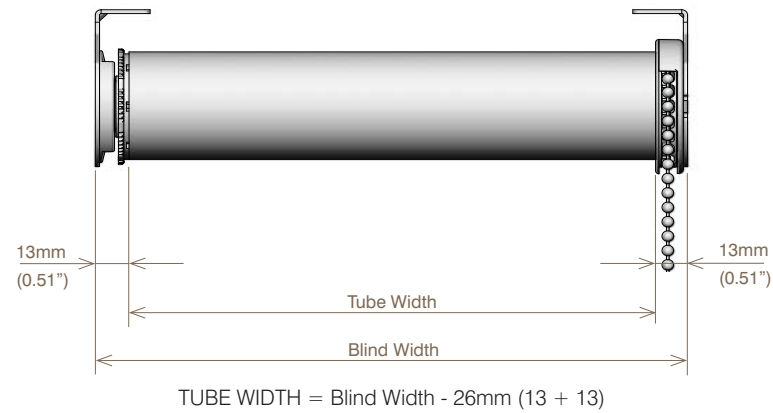
Standard Install Position



Extended Install Position



## DEDUCTIONS



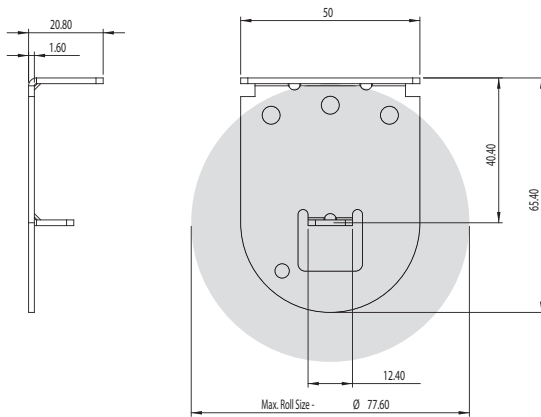
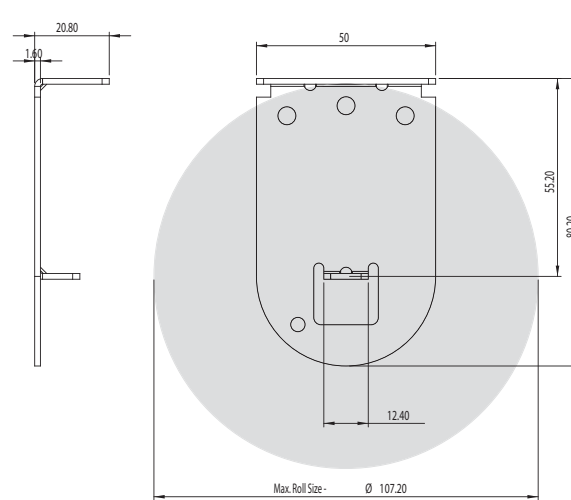
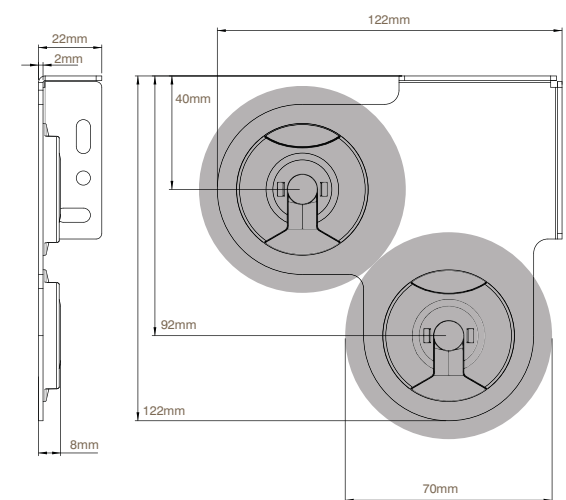
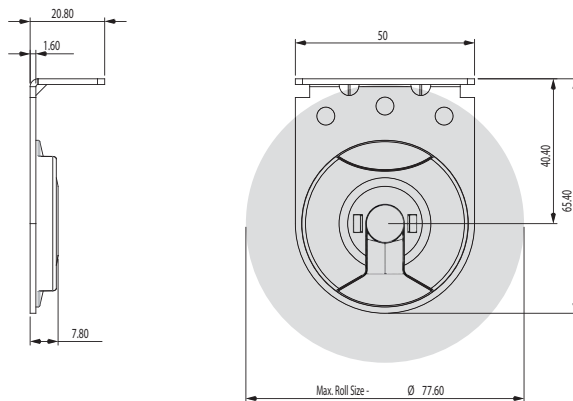
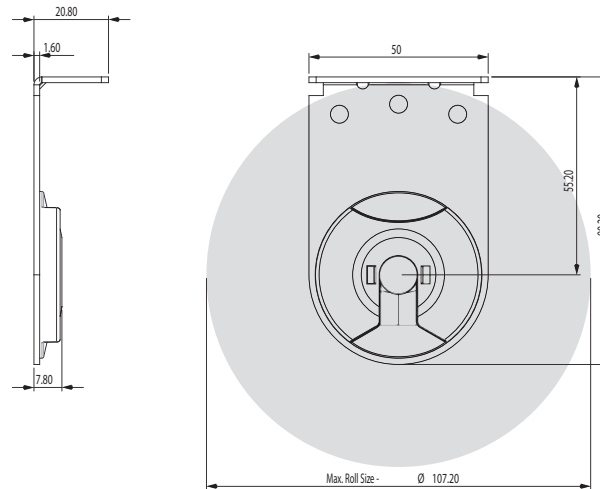
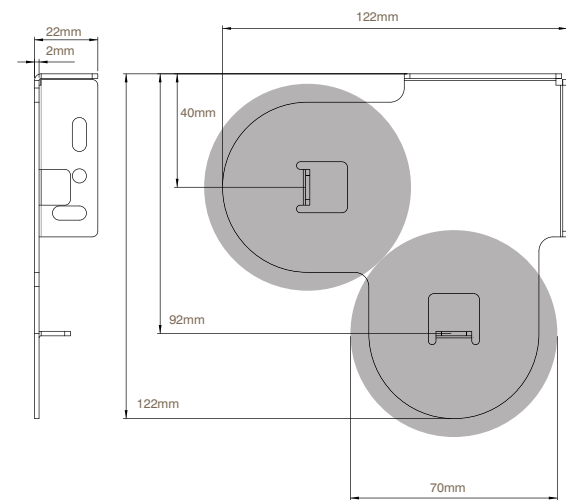
## RECOMMENDED LIFTING CAPACITY OF MECHANISMS

PART NUMBER	DESCRIPTION	MAXIMUM IDEAL LIFTING WEIGHT
RB09-4502-xxx000	RB09 Chain Winder & Extended Idler - SYS45	4 Kg's
RB04-4391-06100x	RB09 Winder with Easy-Lift RETRO-FIT AC Spring Asst Booster STANDARD	6 Kg's
RB04-4392-34000x	RB09 Winder with Easy-Lift RETRO-FIT AC Spring Asst Booster HEAVY DUTY	8 Kg's

## MAXIMUM TUBE WIDTHS

PART NUMBER	DESCRIPTION	FABRICS @ 450g per m2	FABRICS @ 650g per m2
RB93-0443-000580	SYS45   43LIGHT Tube	2000mm	1800mm
RB93-0444-000580	SYS45   44STD Tube	2100mm	2000mm
RB93-0449-000580	SYS45   49HD Tube	2500mm	2400mm

Based on a 2.4mt drop

**RB09-0352-xxx040** | Easy-Lock LX 40p - Control End

**RB09-0352-xxx055** | Easy-Lock LX 55p - Control End

**RB09-8384-xxx122** | Easy-Lock Combo - Control End

**RB09-0352-xxx040** | Easy-Lock LX 40p - Idle End

**RB09-0352-xxx055** | Easy-Lock LX 55p - Idle End

**RB09-8384-xxx122** | Easy-Lock Combo - Idle End


**MATERIALS / COMPOUNDS**

LX Easy-Lock Brackets:	Zinc Plated Steel, Powder Coated
VX / LX Bracket Cover caps:	Plastic Acetal
RB09 Chain Winder & Extended Idler:	Nylon & high tensile wound spring steel
Aluminium Tube:	Extruded Aluminium T5
Easy-Lift Retro-Fit Booster:	Nylon & high tensile wound spring steel with PVC cover

**MECHANICAL SPECIFICATIONS**

Not Applicable

**WARRANTY / TEST CYCLE**

Lifetime Warranty

**ORIGIN**

Designed & developed by Acmeda Australia.