

The SP45 roller blind system is designed for commercial and residential use. It is the smart and modern solution to light and privacy control. SP45 roller blinds can be motorised and controlled by remote, Smartphone App, Home Automation System (HAS) or Building Management System (BMS). Up to 3 blinds can be linked together to one chain or one motor. Its chain control is designed to lift blinds of up to 9 kg while maintaining a strong pull force of less than 3 kg.

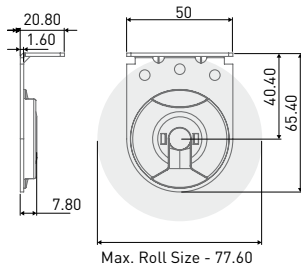
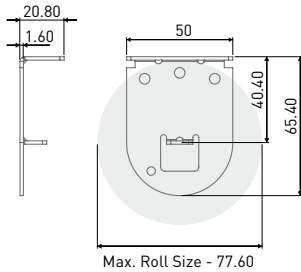
General information

Minimum blind width (chain control)	350mm
Minimum blind width (motorised)	645mm
Maximum blind width	3000mm
Maximum blind drop	3300mm
Linking blinds	up to 3
Bend link	up to 90°
Duo blind system	allowing installation of two layers of blinds in the same window
Retrofit spring assist booster	for easy lifting of heavy blinds
Total Block	fully enclosed aluminium cassette box and side channels
Automation	wire free or 230V motors, controlled by wall switch, remote or BMS

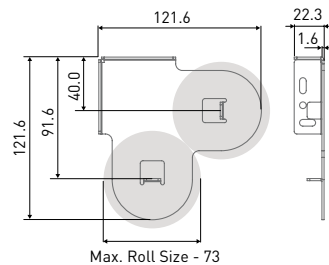
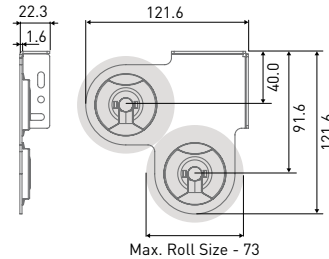


Technical information

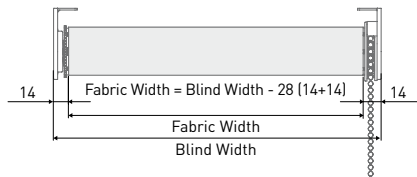
Bracket dimensions



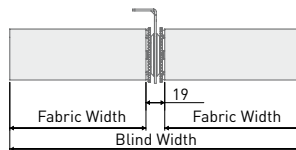
Duo bracket dimensions



Deductions from window measurements



Linked blinds deductions



Specifications

Brackets

- Press formed steel, pre-treated and powder coated
- Top and face fix
- Projection: 40mm; 55mm
- Colours: white; sandstone; grey; black

Head Tube

- Extruded aluminium
- Diameter: 45mm; 49mm

Base Bar

- Extruded aluminium
- Type: edge; linear; oval; square; round
- Colours: anodised; white; bone; sandstone; dune; bronze; black; custom painted

Chain Control

- Direct action, dual reverse clutch
- Colours: white; sandstone; barley; grey; black

Idler

- 10mm plastic idler pin, extendable in 1mm increments
- Self-locating installation feature
- Locking and quick release dial
- Colours: white; sandstone; grey; black

Motorisation

- 230V tubular motors
- Standard and silent motors
- Controls: wall remote; hand-held remote; Smartphone App; HAS; BMS
- Wire free motors with 12V battery wand or rechargeable inbuilt lithium battery or solar board charger (remote control only)