

Soft Light translucent fabric

Soft Light fabrics are designed to filter natural soft light into the room. Some of the fabrics in this range provide privacy from the outside, which is extremely useful in today's compact urban living.

- Made of 100% Polyester with no PVC.
- Translucent opacity.
- Some of the fabrics provide privacy.
- Good UV protection – protects furniture and furnishings.
- Reduces glare.



Splendour



Pure



Nikau



Toroa



Kereru



Kotuku



Mohua



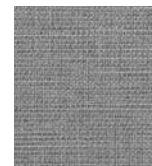
Moa



Huia



Ruru



Tui



Daisy



Magnolia



Orchid



Alpine



Maple



Aspen



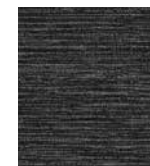
Hazel



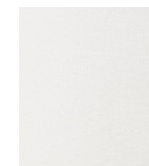
Teak



Ponga



Walnut



Button



Enoki



Porcini



Portobello



Morel



Toi Toi



Harakeke

Soft Light Specifications

Key

5530SP SP Residential Interior Roller Blinds																					
Fabric Name	Width (mm)	Price Category	Openness Factor (OF)	AS/NZ 1530.3 Fire Classifications	Solar Properties			VLT %		PVC		Sustainable Products						Suitable for Moist Conditions	Indent Fabric	Matching Fabric*	Care Instructions**
					As	Rs	Ts	<10	≥10	PVC Free	Global GreenTag	ISO 14001	OEKO-TEX	GREENGUARD	Low VOC	RoHS / Lead Free	100% Trevira CS				
Soft Light Splendour	2000	4	Translucent							•						•				C	
Soft Light Pure	3000	1	Translucent	•						•				•	•	•				C	
Soft Light Nikau	3000	1	Translucent	•						•				•	•	•				C	
Soft Light Toroa	3000	3	Translucent							•							•	•		C	
Soft Light Kereru	3000	3	Translucent							•							•	•		C	
Soft Light Kotuku	3000	2	Translucent	•						•				•	•	•				B	
Soft Light Mohua	3000	2	Translucent	•						•				•	•	•				B	
Soft Light Moa	3000	2	Translucent	•						•				•	•	•				B	
Soft Light Huia	3000	2	Translucent	•						•				•	•	•				B	
Soft Light Ruru	3000	2	Translucent	•						•				•	•	•				B	
Soft Light Tui	3000	2	Translucent	•						•				•	•	•				B	
Soft Light Daisy	3000	3	Translucent		0	54	46		47	•			•	•	•			•		B	
Soft Light Magnolia	3000	3	Translucent		41	34	25		21	•			•	•	•			•		B	
Soft Light Orchid	3000	3	Translucent		21	42	37		34	•			•	•	•			•		B	
Soft Light Alpine	3000	3	Translucent		1	53	46		47	•			•	•	•			•		B	
Soft Light Maple	3000	3	Translucent		12	48	40		39	•			•	•	•			•		B	
Soft Light Aspen	3000	3	Translucent		12	48	40		39	•			•	•	•			•		B	
Soft Light Hazel	3000	3	Translucent		62	21	17		15	•			•	•	•			•		B	
Soft Light Teak	3000	3	Translucent		79	11	10	9		•			•	•	•			•		B	
Soft Light Ponga	3000	3	Translucent		70	17	13		11	•			•	•	•			•		B	
Soft Light Walnut	3000	3	Translucent		85	8	7	5		•			•	•	•			•		B	
Soft Light Button	3000	2	Translucent	•						•								•		B	
Soft Light Enoki	3000	2	Translucent	•						•								•		B	
Soft Light Porcini	3000	2	Translucent	•						•								•		B	
Soft Light Portobello	3000	2	Translucent	•						•								•		B	
Soft Light Morel	3000	2	Translucent	•						•								•		B	
Soft Light Toi Toi	3000	3	Translucent	•	8	57	35		35	•			•	•	•		•			C	
Soft Light Haraakeke	3000	3	Translucent	•	22	51	27		19	•	•		•	•	•		•			C	

OF **Openness Factor** – this factor measures the proportion of holes in a woven fabric. This parameter, together with other technical properties of the fabric, should be considered when determining the degree of visibility, heat and glare control that the fabric offers.

AS/NZ 1530.3 Methods for fire tests on building materials, components and structures. Part 3: Test for simultaneous determination of ignitability, flame propagation, heat release and smoke release.

As **Solar Absorbance** – the proportion of solar radiation (heat) absorbed by the fabric. **A low figure** means the fabric absorbs little solar energy.

Rs **Solar Reflectance** – this factor measures how much solar radiation is reflected by the fabric. **A high percentage** means the fabric performs well at reflecting solar energy.

Ts **Solar Transmittance** – the proportion of solar energy (heat) transmitted through the fabric. **A low percentage** means the fabric performs well at reducing solar energy.

VLT% **Visual Light Transmittance** – the percentage of visible light coming through the fabric, that can be seen by the naked eye. **A low figure** shows a very efficient fabric.

PVC Free Does not contain PVC.

ISO 14001 The ISO 14001 standard is the most important international standard specifying the requirements of an Environmental Management System (EMS). Companies who implemented the ISO 14001 standard cannot use any harmful substances in their products.

OEKO-TEX The STANDARD 100 by OEKO-TEX® is a worldwide independent testing and certification system for harmful substances in textile products.

GREENGUARD This programme certifies materials for low chemical emissions, based on independent scientific testing and ongoing monitoring.

Global GreenTag A third party, green building product rating and certification system, underpinned by rigorous scientific and Life Cycle Assessment (LCA) processes.

VOC **Volatile Organic Compound** – these are organic chemicals that have a high vapour pressure at ordinary room temperature. This causes a large number of molecules to evaporate and enter the surrounding air. A fabric that has been certified for Low VOC Emissions has no, or very low levels of, these chemicals.

RoHS / Lead Free **Restriction of Harmful Substances** – the RoHS directive issued by the EU aims to restrict the use of certain dangerous substances. Any RoHS compliant component is tested for the presence of Lead (Pb), Cadmium (Cd), Mercury (Hg), Hexavalent chromium (Hex-Cr), Polybrominated biphenyls (PBB), and Polybrominated diphenyl ethers (PBDE). For Cadmium and Hexavalent chromium, there must be less than 0.01% of the substance. For Lead, PBB, and PBDE, there must be no more than 0.1% of the material. Any RoHS compliant component must have 100 ppm or less of mercury and the mercury must not have been intentionally added to the component.

Trevira CS Trevira CS is a high spec, eco-friendly type of man-made yarn, which is free of PVC, Halogen and Formaldehyde. It is inherently and permanently fire-retardant thanks to its molecular structure. It stands for textiles made of 100% flame retardant fibres and yarns by Trevira and their partners in the spinning and yarn finishing stages.



*Matching fabric names are listed on the back of applicable fabric swatches.

**Care instructions are explained in the SP Blinds price list booklet.

