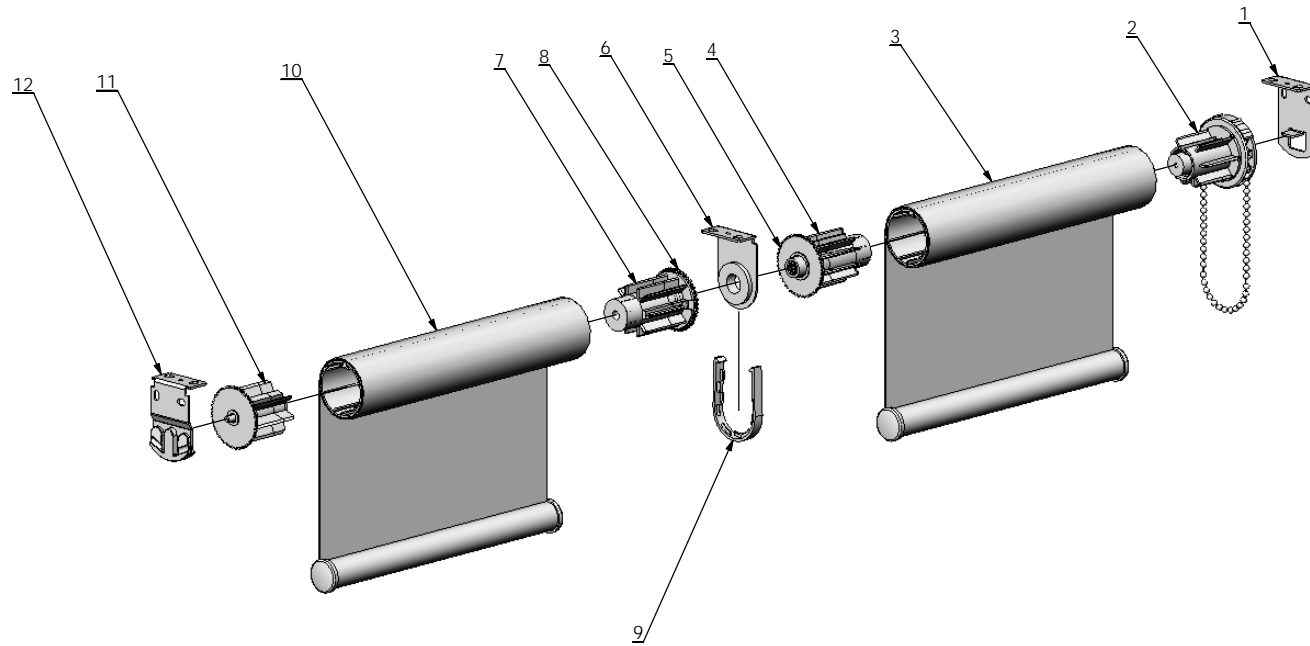


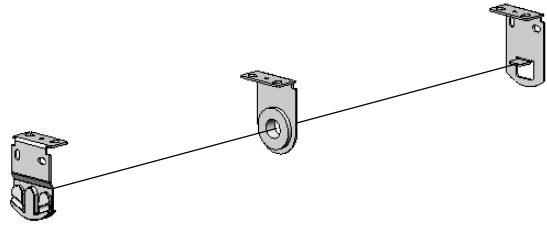
# Easy-Link Manual



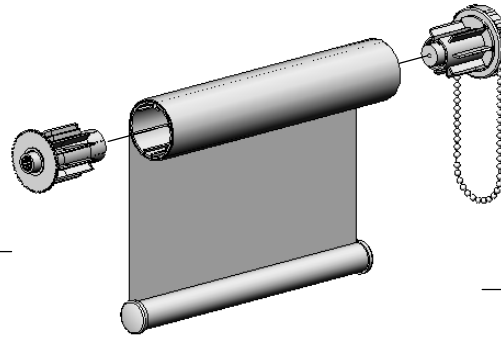
ITEM NO.	DESCRIPTION	QTY
1	Chain Winder / Control Bracket	1
2	Control (Chain Winder / Spring / Crank / Motor)	1
3	Blind 1	1
4	Easy-Link Intermediate Female Drive	1
5	Easy-Link Intermediate Female Drive Wheel	1
6	Easy-Link Intermediate Bearing Bracket	1
7	Easy-Link Intermediate Male Drive	1
8	Easy-Link Intermediate Male Drive Wheel	1
9	Easy-Link Intermediate Bearing Bracket Cover	1
10	Blind 2	1
11	Guided Component (Idler / Auto-Idler / Spring)	1
12	Idle End / Spring Booster Bracket	1



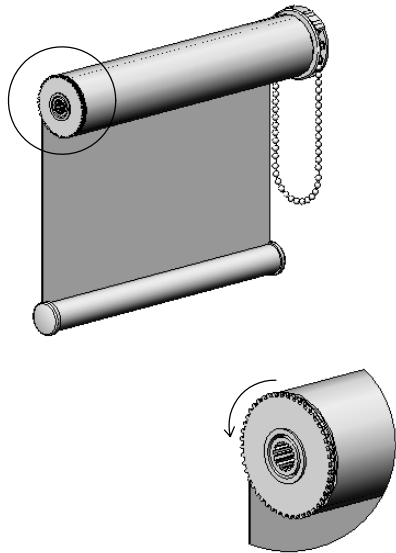
STEP 1



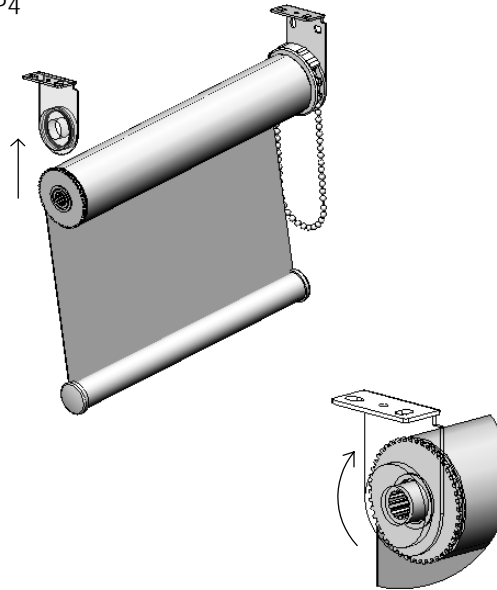
STEP 2



STEP 3



STEP 4



Acmeda INSTALLATION

ROLLER BLINDS

EASY-LINK

For instructional purposes, the following options have been shown:

- *Easy-Link Intermediate 'AC' Bearing Bracket.*
- *Top Fix installation.*
- *RB08 Easy-Lock 'AC' Chain Winder System* (*Chain Winder* installed in right-hand side of tube).

Rotation Direction:

- If the *Control (Chain Winder / Spring / Crank / Motor)* is installed in the left-hand side of tube, the rotation direction is opposite to what is described below.

INSTALLATION INSTRUCTIONS:

STEP 1:

- Mount *Chain Winder / Control Bracket, Easy-Link Intermediate Bearing Bracket & Idle End / Spring Booster Bracket* in desired position to wall or ceiling with screws.

STEP 2:

- Install *Control (Chain Winder / Spring / Crank / Motor)* & *Easy-Link Intermediate Female Drive* into tube of *Blind 1*.
- Ensure *Easy-Link Intermediate Female Drive* is installed in tube at opposite end of *Control (Chain Winder / Spring / Crank / Motor)*.

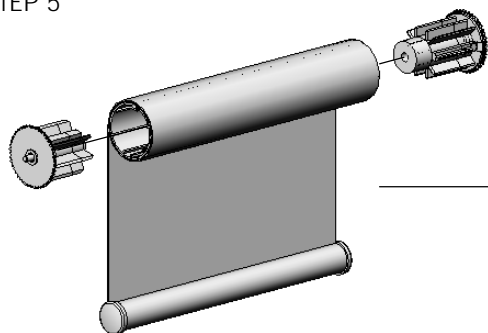
STEP 3:

- Rotate *Easy-Link Intermediate Female Drive Wheel* counter-clockwise to retract the connection inside the *Easy-Link Intermediate Female Drive*.

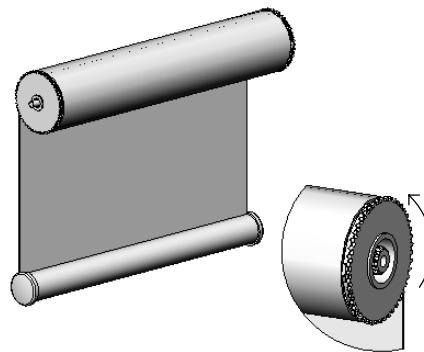
STEP 4:

- Mount *Control (Chain Winder / Spring / Crank / Motor)* onto *Chain Winder / Control Bracket*.
- Mount *Easy-Link Intermediate Female Drive* onto *Easy-Link Intermediate Bearing Bracket*.
- Rotate *Easy-Link Intermediate Female Drive Wheel* clockwise to release the connection from inside the *Easy-Link Intermediate Female Drive*.
- Ensure *Blind 1* is fixed securely.

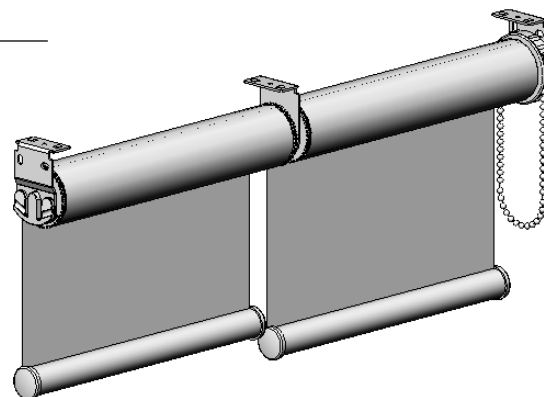
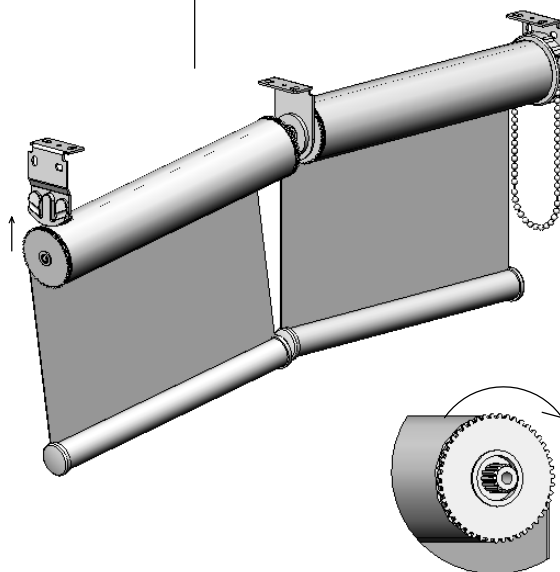
STEP 5



STEP 6



STEP 7



Acmeda | INSTALLATION

## ROLLER BLINDS

EASY-LINK

STEP 5:

- Install *Easy-Link Intermediate Male Drive & Guided Component (Idler / Auto-Idler / Spring)* into tube of *Blind 2*. Ensure *Guided Component (Idler / Auto-Idler / Spring)* is installed in the last blind (furthest away from *Blind 1*).

STEP 6:

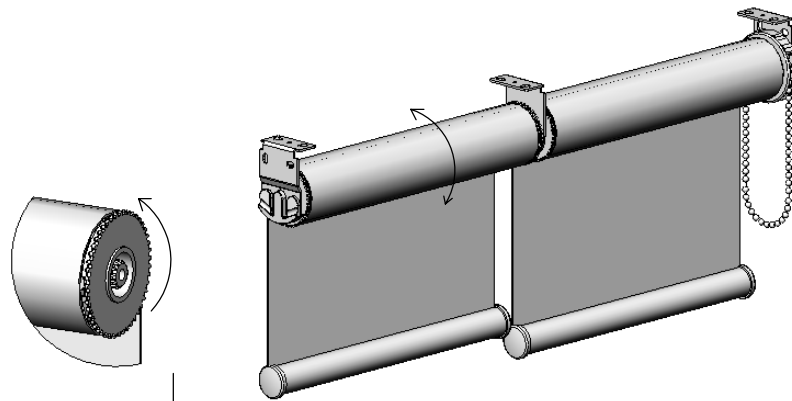
- Rotate *Easy-Link Intermediate Male Drive Wheel* counter-clockwise to retract the connection inside the *Easy-Link Intermediate Male Drive*.

STEP 7:

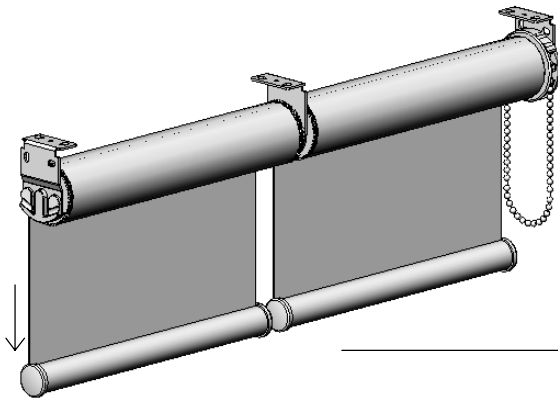
- Mount *Guided Component (Idler / Auto-Idler / Spring)* onto *Idle End Spring Booster Bracket*.
- Mount *Easy-Link Intermediate Male Drive* onto *Easy-Link Intermediate Bearing Bracket*.
- Rotate *Easy-Link Intermediate Male Drive Wheel* clockwise to release the connection from inside the *Easy-Link Intermediate Male Drive*. The connection will engage with the *Easy-Link Intermediate Female Drive*.
- Ensure *Blind 2* is fixed securely.



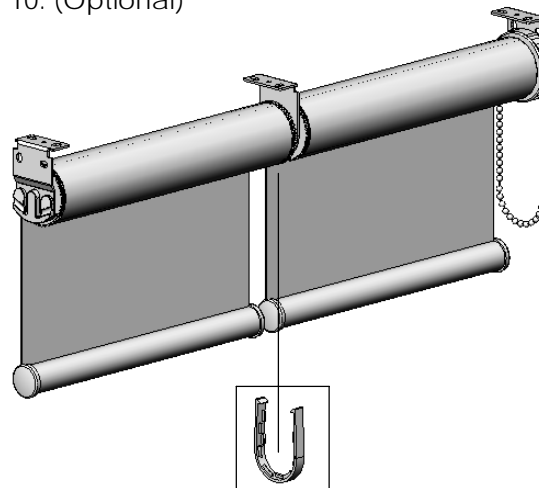
STEP 8



STEP 9



STEP 10: (Optional)



BOTTOM RAIL LEVELING:

(STEPS 8 & 9 ONLY REQUIRED IF FABRIC LENGTH IS NOT EVEN)

STEP 8:

- Rotate *Easy-Link Intermediate Male Drive Wheel* counter clockwise to retract the connection inside the *Easy-Link Intermediate Male Drive*.
- Whilst holding *Blind 2* (with *Easy-Link Intermediate Male Drive* installed), rotate and align fabric of *Blind 1*.

STEP 9:

- Rotate *Easy-Link Intermediate Male Drive Wheel* clockwise to release the connection from inside the *Easy-Link Intermediate Male Drive*.
- Ensure *Blind 2* is fixed securely.

STEP 10: (Optional)

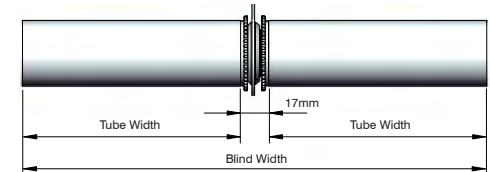
- Install *Easy-Link Intermediate Bearing Bracket Cover* if desired.



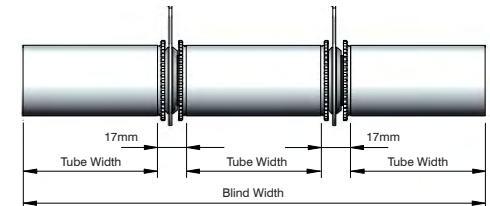
**Recommended Maximum Tube Widths**

Tube Type	Product Code	Fabrics above 400g per m2	Fabrics below 400g per m2
SYS 40 SPLINE Aluminium Tube	<b>RB91-0237-000480</b>	1800mm	2200mm
SYS 40 KEYWAY Aluminium Tube	<b>RB91-0238-000550</b>	1800mm	2200mm
SYS 40 KEYWAY Heavy Duty Aluminium Tube	<b>RB91-0240-000550</b>	2400mm	2700mm
SYS 45 KEYWAY Aluminium Tube	<b>RB91-0243-000550</b>	2600mm	2900mm
SYS 45 SPLINE Heavy Duty Aluminium Tube	<b>RB91-0249-000580</b>	2900mm	3200mm

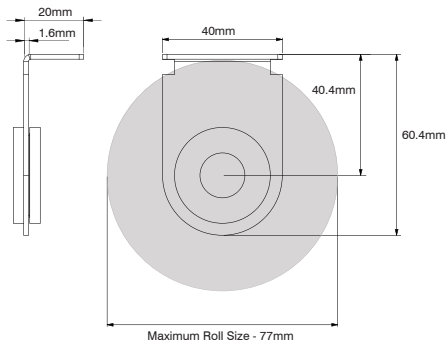
**RB41 - Easy-Link**



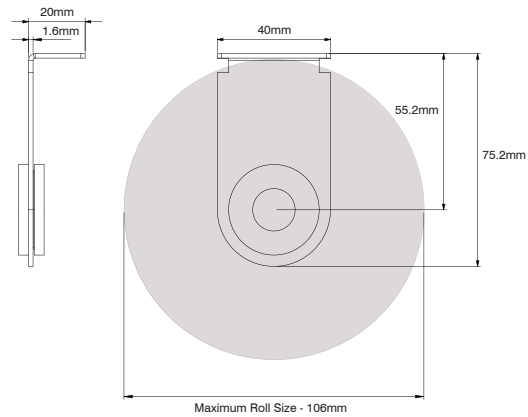
**RB41 - Easy-Link Double**



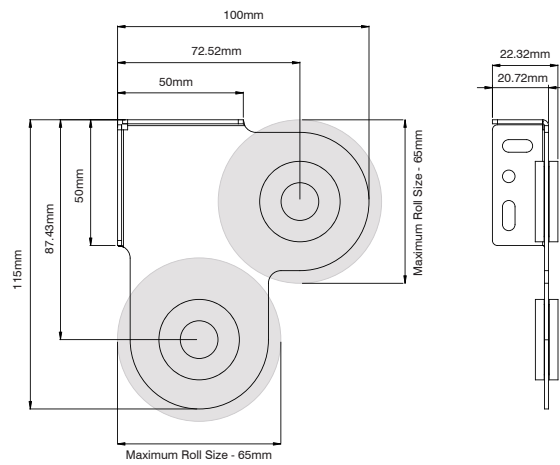
RB41 - 40mm 'AC' Easy-Link Intermediate Bearing Bracket



RB41 - 55mm 'AC' Easy-Link Intermediate Bearing Bracket



RB41 - Slimline Combo Easy-Link Intermediate Bearing Bracket



RB41 - Square Combo Easy-Link Intermediate Bearing Bracket

